






User Manual-GD200

Thanks for purchasing our product. Please read the user manual carefully before using.

Keys Operation:

| | |
|-----------------------------------------------------------------------------------|--------------------------------------------------------------------------------------------------------------------------------------------------------|
|  | Turn on/off: long press for 3s to turn on/off the device, short press to confirm or save data. |
|  | Menu: in detection mode, press this button to enter into parameter setting mode, and in parameter setting mode, press this button to move the cursor. |
|  | Plus: in parameter setting mode, short press it to select items upward or add value. Long press for 3 seconds to turn on/off alarm function quickly. |
|  | Minus: in parameter setting mode, short press it to select items downward or decrease value. Long press for 3 seconds to turn on/off air pump quickly. |
|  | Exit: in parameter setting mode, short press it to go back to previous menu. Long press to shift the gas concentration unit quickly. |

(Note: The long press function only work in detection mode. When you change or reset any data, please remember to click

“ON/OFF” button to confirm and save the settings. Remember to turn on the pump when start the detection. Please turn off the pump when there is no need to detect, which will be helpful for the service life of the pump)

Power On / Off

Put the detector in clean air, and press the “ON/OFF” for three seconds, the detector will be turned on and the pump will start to work. The screen displays the following interface successively: Brand and Logo, main parameter interface, initialing countdown. The countdown would be 60 or 120 seconds, which is to make sure that the sensors are fully activated. After countdown, the device enter normal detection interface.

Take the detector out of the detected environment and wait for the data to get down to zero, then press the “ON/OFF” to turn off the detector

Zero Calibration

Zero calibration must be done in clean air. Better to do once after alarming happens.

Press “MENU” to enter parameter setting mode, select the "calibrate zero", and press “ON/OFF” to enter the mode. Observe the value of “real time concentration”. If the reading is not zero and the drifting is too big when the reading is stable, then it is necessary to conduct zero point calibration.

Press “ON/OFF”, the real-time concentration will go back to zero, and press ”ESC” to go back to detection mode, gas concentration values also back to zero.

Note: Zero calibration of oxygen detector, nitrogen detector and carbon dioxide detector (target gases are component of the air) can not be done in the air. Only the target point calibration (value of target point concentration is the standard concentration values in the clean air) can be done.

Process of Over-range incorrect operation

Users should avoid using gases which exceed the measure range to impact the sensor, because it will affect the lifespan and sensitivity of the sensor, even, "poison" the sensor. If there is any over-range incorrect operation makes the detector displaying an concentration at a large reading, the remedy is to take the device out of the environment immediately and put it in clean air for over half an hour, and then observe the reading, if it keeps going down, then wait until the reading back to zero before powering it off, and do the zero point calibration next time before using it. If the reading maintained at full scale, user should send the device back to manufacturer or agent for repair or replacing the sensor.



Note

*If detector is used for the gas cylinder detection, considering the high pressure in the cylinder, please use a pressure regulator, and keep it as the below data:

Flow rate: 800mL~1L/minute

Pressure: 0.1MPa or 1Bar

*Please put the detector in clean air for about 5 minutes and waiting for the data falling down to normal before turning it off after measurement.

Operation Interface

When the detector is turned on completely, the device will enter the detecting interface. The gas type will be showed on the top left, and the time and battery power will be at the right. In the middle, there is the real-time concentration. If the detector is with data storage function, there will be the storage status at the top of the concentration: ON or OFF, and the total storage number. There will be BEEP-ON at the bottom left, which means the alarm is on. The PUMP-ON at the bottom right, which means the pump is working.

Alarm Status

When the detected gas concentration is higher than the low alarm value, the alarm sound will be on, yellow light will be flickered.

When the detected gas concentration is high than the high alarm value, the alarm sound will be on, red light will be flickered.

Alarm Setting

Press “Menu”, choose the “Alarm point set”, and start to set the alarm value.

There are LOW POINT and HIGH POINT for set, press “MENU” to move the cursor to the value you want to set, and press the “PLUS” or “MINUS” to change the value. After the setting is done, press “ON/OFF” button to save the settings.

Low Battery Alarm

When the battery is low, there will be sound, light low battery alarm. There will be sound and light every 5 seconds to remind the user to charge the device in time. When the battery is used up, the device will be turned off automatically.

Restore Setting

When all the settings are wrong, or users operate the detector in a wrong way, you can restore the detector to factory settings. But if the detector works normally, please don't operate this setting. In order to avoid wrong setting, password is needed. If you want to restore the detector to factory setting, please contact the supplier.

Storage set

In the storage setting, you can set the storage status and the interval. Every time you turn on the detector, the storage status defaults OFF, so you need to set the storage status if you want to record the data.

Press MENU, choose the “Storage set”, move the cursor by pressing MENU at the “ENABLE”, press MINUS to change NO to YES.

The storage interval can be 5 seconds, 10 seconds, 15 seconds, etc. The highest interval is 1 hour.

View history data

Press the MENU, choose “view history data”. Then at the top is the record total number, and the reminder “PLEASE SELECT”. Now, if you press MINUS, then the record data will be from the first record to the second in turn. If the record number is above 10, and you want to check the specific number, you press the MENU again, then you can input the exact number and check that record (press the MENU to move the cursor, and press the MINUS and PLUS to change the number), press ON/OFF to confirm and then you will see the detailed record. In the detailed record interface, at the top are the record total number and current number. In the middle are the date and time, and the concentration is at the bottom.

Erase history data

To make sure the detector work perfectly and you can check the history data quickly, we suggest you to erase the history data regularly. Press MENU, choose the “Erase ex_flash”, password is needed (the password is 9999), then press ON/OFF, it shows that “erasing”, and when finished, it will turn back to the detecting interface.

Target Point Calibration

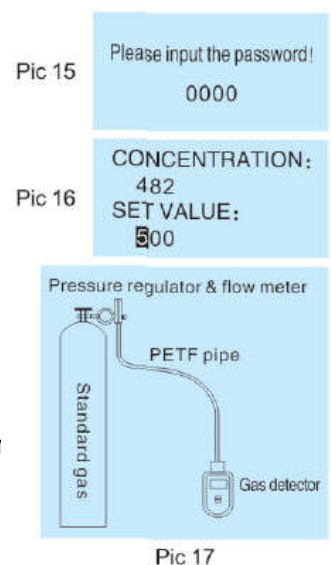
Note: Calibration needs to be done by professionals and with necessary accessories and standard gas.

Prepare the standard gas before starting the target point calibration. In detection mode, press “MENU”, select “calibrate span”, press ON/OFF button to enter. Then you will need to enter password. (If you need password, please contact the manufacturer to get it)

After entering the password successfully, press ON/OFF to enter the target point calibration interface, as shown in the picture. The interface will display “concentration”, “set value. The concentration is the result got from the calculation of several internal calibration parameters. The process of calibration is the process to recalculate the internal parameters of the device. The set value is the value need to be entered manually; it should be the concentration of the standard gas to be calibrated. Select the parameter under the current interface, modify its value with “PLUS” and “MINUS” button.

The calibration process is as below:

1. Connect the detector with standard gas cylinder by hose.
2. Enter the target point calibration interface, set the “SET value” as the standard gas concentration.
3. Release the standard gas to the detector in a flow rate of 500mL/min. The value of “concentration” will become larger gradually, and become stable after 30seconds.
4. When the value of “concentration” is stable, press the “ON/OFF” button, the value of “concentration” will be same with or almost same with the “Set value”. The calibration is finished.
5. Cut off the standard gas supply. Press “ESC” to go back to detection interface.



Data Downloading Operation Instructions

1. Storage settings

1) Press “Power On” to turn on the instrument (Figure 1), press “MEUN” to enter the menu interface (Figure 2), press “<” or “>” to enter the “Storage Parameter Settings” page (Figure 3) .



Figure 1



Figure 2



Figure 3

2) Select “Storage Set” and press “power-on” button to enter the next screen (Figure 4), press the “MEUN” button to select “NO” (Figure 5), press the “<” or “>” button Select “Yes” and press the “Enter” key to save the settings (Figure 6).



Figure 4



Figure 5



Figure 6

3) Press “ESC” to return to the main page and view “STORAGE ON”, indicating that the storage is already on (Figure 7), and the number of recorded messages is displayed in the upper right corner of the screen (Figure 8). If it is "STORAGE OFF", the storage is not turned on.



Figure 7



Figure 8

2. Instrument and computer connection

Keep the instrument turned on, and connect the instrument and computer with the data cable. (Connect the MINI USB cable to the USB port of the instrument, and connect the USB cable to the USB port of computer (Figure 9).)



Figure 9

3. Driver installation

1) Insert the CD into the CD drive and find the installation file (For example with "Portable storage software -- English"). Click on the page shown in Figure 10, click on the "Hardware Driver" option (Figure 11), and click on "CH340 Driver (USB Driver)_XP_WIN7" option (Figure 12).

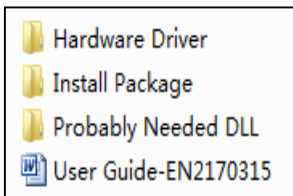


Figure 10

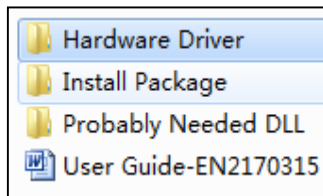


Figure 11

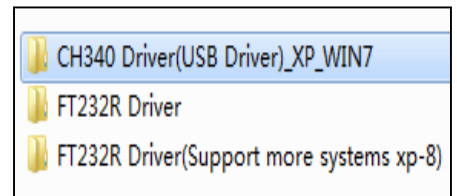


Figure 12

2) Go to the page of Figure 13, click "SETUP" to enter the installation interface (Figure 14), click "Install", enter the interface of Figure 15, to display "Drive installation completed", click "OK", the driver installation is complete.

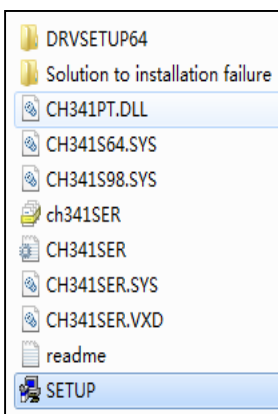


Figure 13

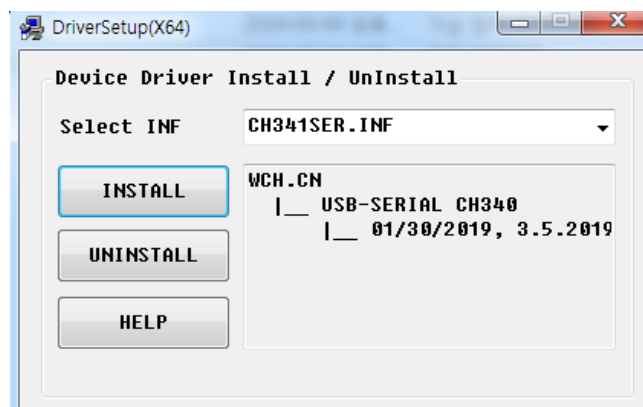


Figure 14

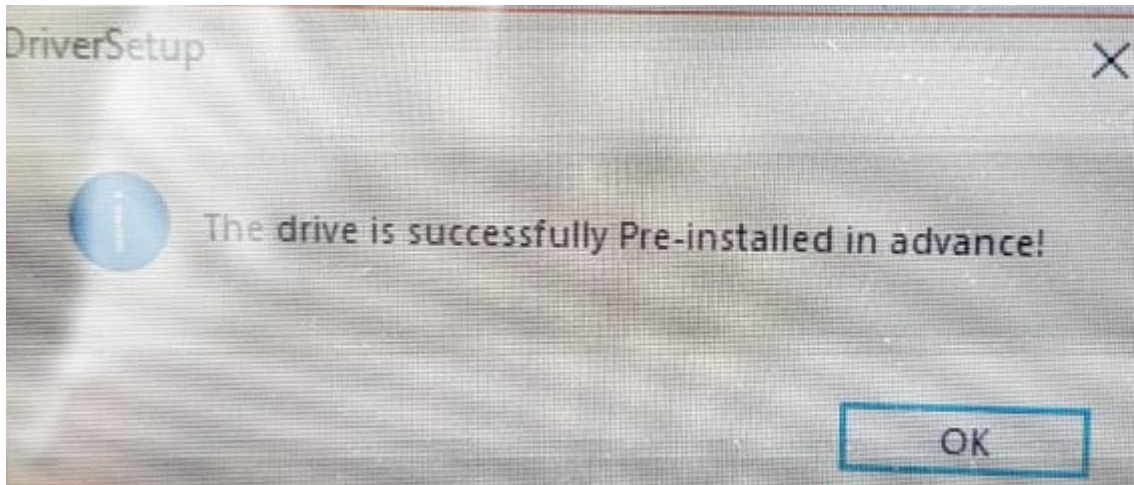


Figure 15

3) Drive installation check

Right-click "My Computer" to enter the "Device Manager" interface (Figure 16), check the port has a "USB-SERIAL CH340" display indicating that the driver is successfully installed and connected. If the instrument and computer connection are abnormal, it is necessary to check whether the instrument is powered on, the USB interface and the data cable are abnormal.

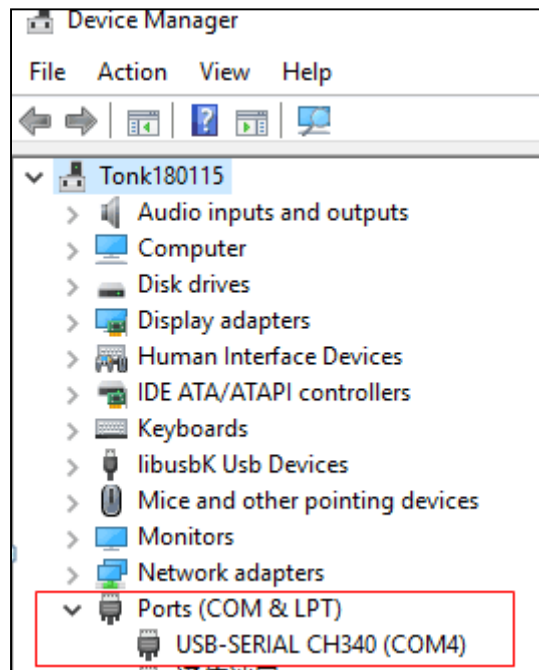


Figure 16

4. Software installation

1) Return to the installation file interface (Figure 10), select and click "Install package" (Figure 17), click "setup" to install the program (Figure 18), enter the program installation interface, until the installation is complete (Figure 19). After successful installation, close the installation interface, the program icon will appear on the desktop (Figure 20), and the software installation is complete.

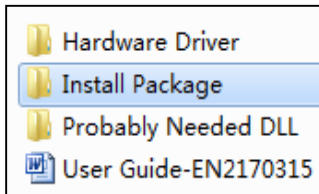


Figure 10

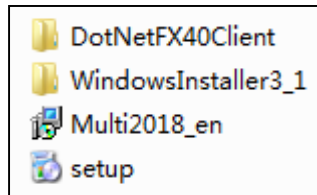


Figure 17

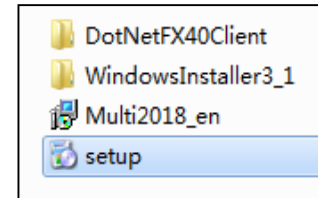


Figure 18

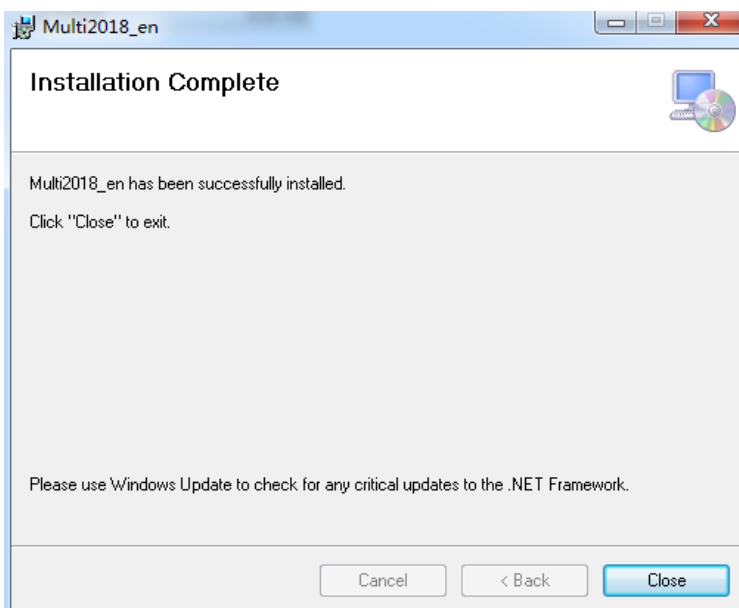


Figure 19



Figure 20

5. Data operation

1) Click the program icon to enter the program interface (Figure 21), click on "Find Port", and select "COM4" (drive installed serial port)

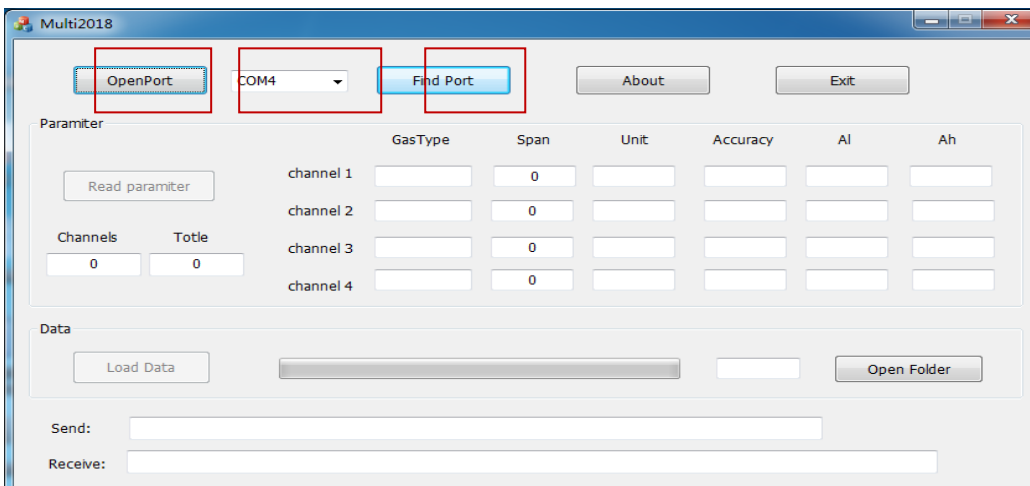


Figure 21

2) Click the "OpenPort" button, then click the "Read parameter" button to check if there have parameters in the red mark of Figure 22. If there have parameters, it is normal.

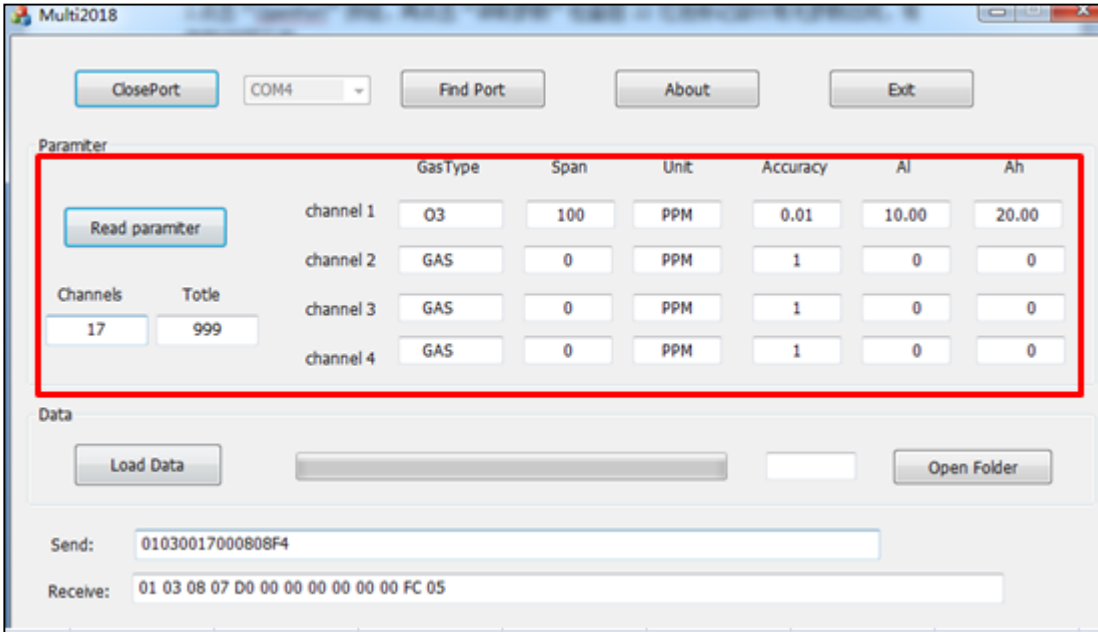


Figure 22

3) Click the "Load Data" button, when the progress bar reaches 100%, the data guide is completed (Figure 23).

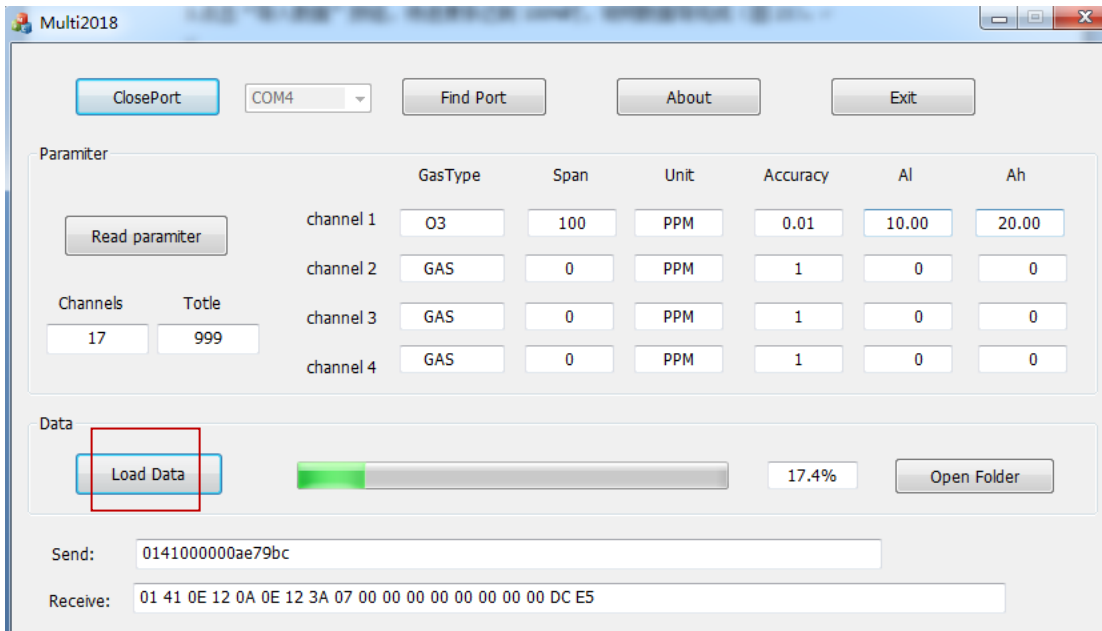


Figure 23

- 4) After the data import is completed, click the “Open Folder” button (Figure 23), the “MULTI_RECORD_DATA” folder will be automatically played (Figure 24). And the EXCEL file will appear and which is the imported storage data file. Click to view the data (Figure 25);

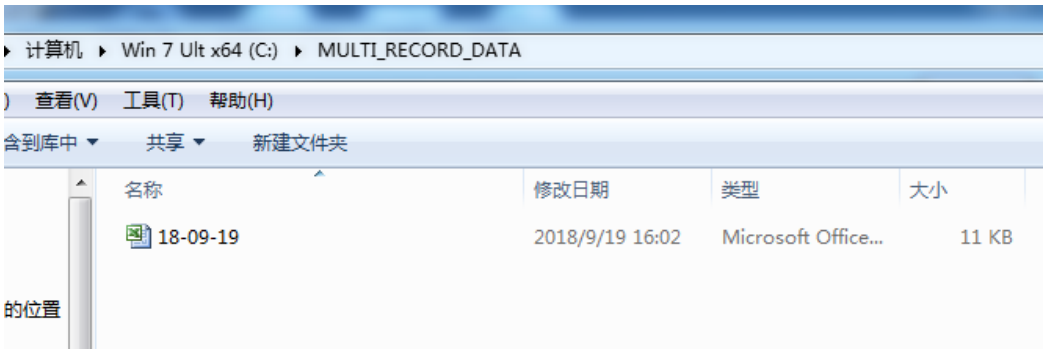


Figure 24

| Time | CH1 Gas_type | CH1 Value | CH1 Unit | CH2 Gas_type | CH2 Value | CH2 Unit | CH3 Gas_type | CH3 Value | CH3 Unit | CH4 Gas_type | CH4 Value | CH4 Unit |
|---------------------|--------------|-----------|----------|--------------|-----------|----------|--------------|-----------|----------|--------------|-----------|----------|
| 2018-10-09 17:48:41 | 03 | 0.00 | PPM | GAS | 0 | PPM | GAS | 0 | PPM | GAS | 0 | PPM |
| 2018-10-09 17:48:46 | 03 | 0.00 | PPM | GAS | 0 | PPM | GAS | 0 | PPM | GAS | 0 | PPM |
| 2018-10-09 17:48:51 | 03 | 0.00 | PPM | GAS | 0 | PPM | GAS | 0 | PPM | GAS | 0 | PPM |
| 2018-10-09 17:48:56 | 03 | 0.00 | PPM | GAS | 0 | PPM | GAS | 0 | PPM | GAS | 0 | PPM |
| 2018-10-09 17:49:01 | 03 | 0.00 | PPM | GAS | 0 | PPM | GAS | 0 | PPM | GAS | 0 | PPM |

Figure 25

6. The necessary conditions for exporting data

- 1) The instrument must have storage and export functions
- 2) The computer's operating system: Windows XP / Window7 / Window8 / Window10 system, and the office software or Jinshan Company's WPS office software installed, the application software will use the EXCEL component.
- 3) Install the hardware driver and application: Insert the installation CD into the CD drive, and the content installation file on the CD can be copied to the hard disk for backup.
- 4) Connection status: The instrument should be in the normal turn-on state, and the instrument and the computer are connected through the standard USB data cable.

7. Attention

- 1) When importing data, the EXCEL file will be created automatically and named after the date of import. Only one file will be generated in one day. If there are multiple instruments in the day that need to be imported, when importing the next data, please removed or renamed the last instrument data file.
- 2) When there is too much source data for each instrument, please save the exported data to the computer and erase the data in the instrument to avoid the data save slowly.
- 3) When exporting data, individual date or data is “garbled”. This is because the battery voltage is too low (requires timely

charging). Please import and save the data in the computer and then erase the data in the instrument. After charging, the data will be recorded normally.

4) The storage settings need to be turned off when exporting data.