

sisco

OBD Car Diagnostic Scanner



USER MANUAL

Product Instruction

This product is mainly used to read the data of car engine and emissions, diagnostic car engine trouble, and erase trouble codes.

Main function

This product can diagnose vehicle health, alarm vehicle safety, real-time monitoring vehicle health, detailed display of vehicle indicators (voltage, coolant temperature, fuel correction, engine load value, etc.) diagnostic value, check the car, physical switch, read

and erase the fault code.

Find OBD interface

Find the OBD interface in the car. The OBD interface may located in different place for different vehicle models. (Generally located on the underside of the dashboard on the driver's side of the car, above the accelerator pedal)



Use mobile browser to scan the QR code below.



Android

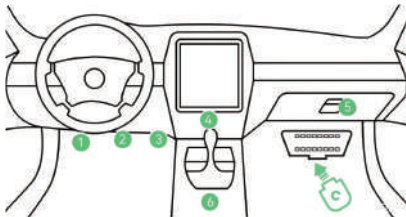


iOS

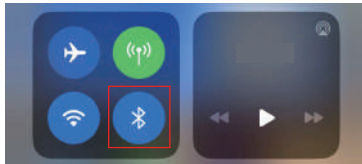
You can also search for the software name "OBDII AI" on Google Play or Apple Store to download it.

Connection step (iOS)

1.Plug the product into the car OBD interface



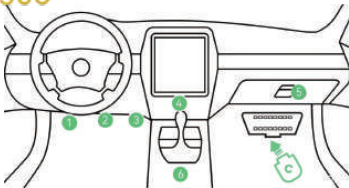
2. Turn on your phone's Bluetooth



Connection step (Android)

1. Plug the product into the car OBD interface

sisco



2. Please open Bluetooth/GPS in the phone control center



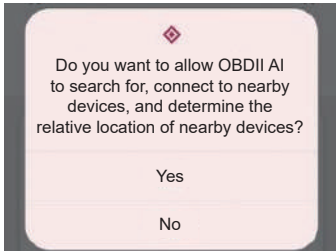
3. Enable location permission, select (only allowed when using this application)

Attention: Starting from Android 6.0, you need to enable location permission to search for Ble devices!



4. Enable nearby device permissions and select (Allow).

Some higher version Android phones need to be set to allow device connection.





5. After the above preparations are ready, open the APP and automatically connect the OBD device.

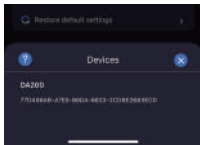
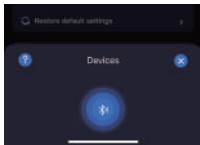
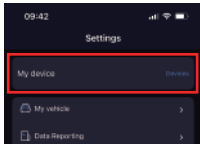
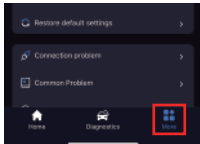
Connection step

Open the APP, the product automatically connects successfully, you can start to detect the vehicle.



Manually connect the connection

Select “More” → Select “my device”



If the connection is not possible, please confirm whether the vehicle starts, reinsert the product, and then enter the APP for connection. If all of the above operations fail to connect, the vehicle does not support detection.